

2601025_TP_EL-9-03_ylekaigurada-arvutus

ülekäiguraja valgustusarvutus

Objekt
11304 Aruküla-Kostivere tee,
Aruküla, Raasiku vald, Harju
maakond

Sisu

Tiitelleht	1
Sisu	2
Kontaktid	3
Kirjeldus	4
Valgustite loend	5

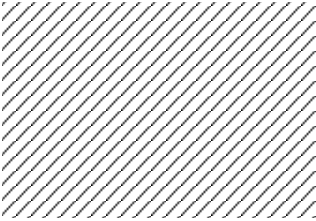
Toote andmekaardid

Philips - BGP282 LED18-4S/757 DPR1 (1x LED18-4S/757)	6
Philips - BGP282 LED69-4S/730 DM10 (1x LED69-4S/730)	7

Territoorium 1

Valgustite asendiskeem	8
Arvutuse objektid / Valgusstseen 1	11
Arvutuspind 4 / Valgusstseen 1 / Ristine valgustustihedus	13
Arvutuspind 5 / Valgusstseen 1 / Ristine valgustustihedus	14
Arvutuspind 6 / Valgusstseen 1 / Ristine valgustustihedus	15
Arvutuspind 7 / Valgusstseen 1 / Ristine valgustustihedus	16

Kontaktid



projekteerija

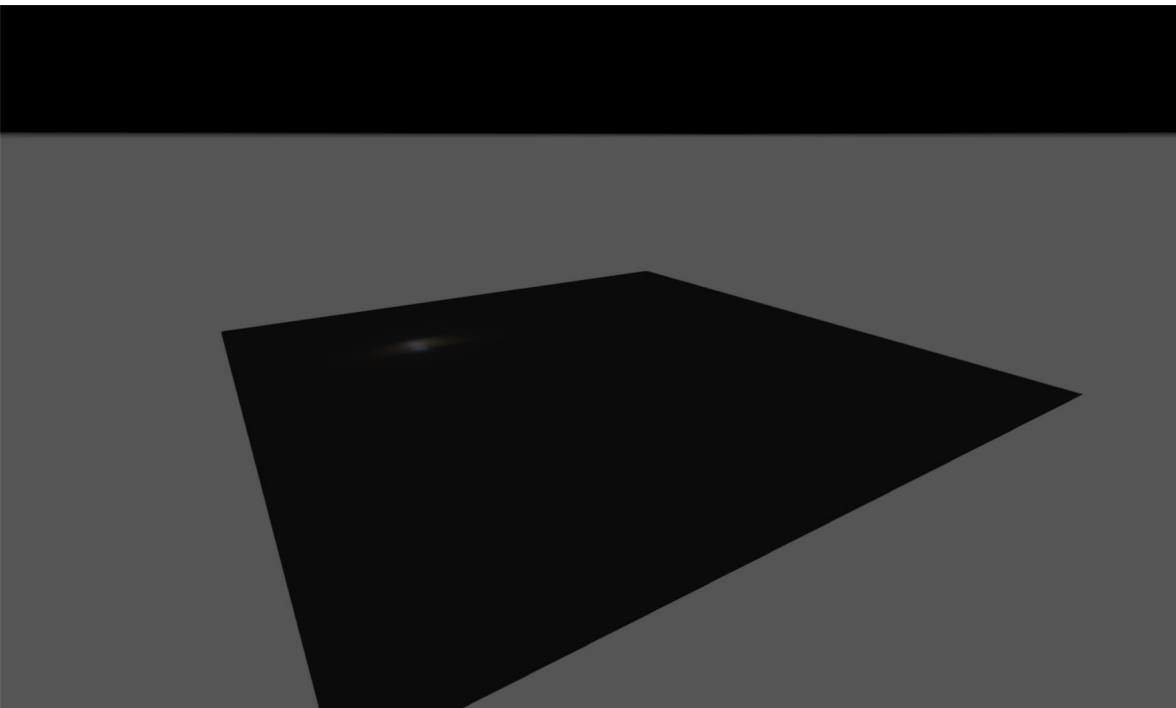
Dmitry Kondaev

Connecto Eesti AS

Tuisu 19, Kristiine, Tallinn,
Harjumaa

T 53231201

dmitry.kondaev@connecto.ee



Kirjeldus

Ülekäiguraja valgustusarvutus riigitee alal

projekteerija

Dmitry Kondaev

Connecto Eesti AS

Tuisu 19, Kristiine, Tallinn,
Harjumaa

T 53231201

dmitry.kondaev@connecto.ee

Valgustite loend

 Φ_{kokku}

9330 lm

 P_{kokku}

64.4 W

Valgusviljakus

144.9 lm/W

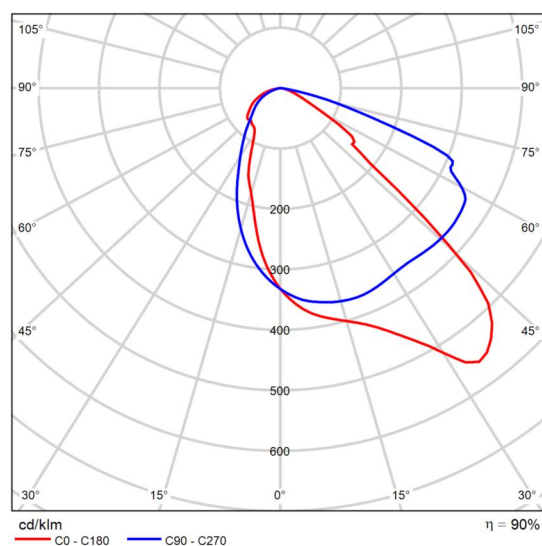
tk	Tootja	Artikli nr.	Artikli nimi	P	Φ	Valgusviljakus
2	Philips	BGP282I-31354e4 2-cf40-4e33- b87a- b81313b 7e454	BGP282 LED18-4S/757 DPR1	11.2 W	1620 lm	144.6 lm/W
1	Philips	BGP282I-76d5d47 d-04ad-4213- ac66- 1c3405f3 dbd4	BGP282 LED69-4S/730 DM10	42.0 W	6090 lm	145.0 lm/W

Toote andmetabel

Philips - BGP282 LED18-4S/757 DPR1



Artikli nr.	BGP282I-31354e42-cf40-4e33-b87a-b81313b7e454
P	11.2 W
Φ_{Lamp}	1800 lm
Φ_{Valgusti}	1620 lm
η	90.00 %
Valgusviljakus	144.6 lm/W
CCT	5700 K
CRI	70



Polaarne LDC

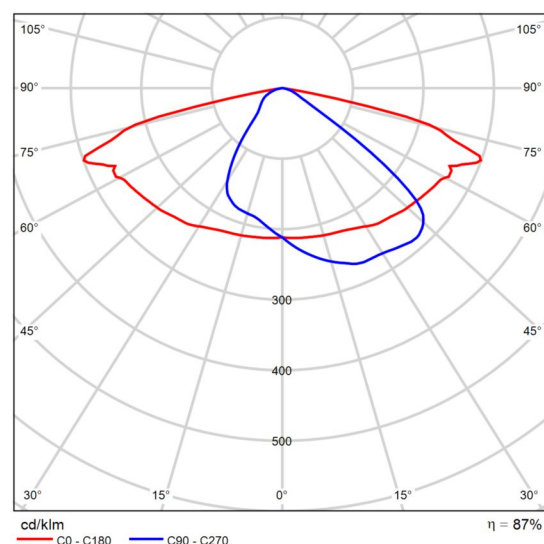
Designed for ledification projects, the LumiStreet gen2 is the ideal 1:1 luminaire replacement for municipalities. Thanks to its high efficiency and low initial cost, the LumiStreet gen2 luminaire enables a fast payback and significant savings in terms of energy consumption within a short period of time. The ease of installation and maintenance is enabled by the Service tag and the SR (System Ready) Zhaga socket(s) makes it future-ready, and you can pair this luminaire with lighting control or sensors and software applications such as Interact City. Available with a significant number of different optics and lumen packages that can even be tuned further to fit exact project requirements, LumiStreet gen2 is a true point-to-point replacement solution for conventional or generation 1 LED light sources. The compact luminaire, using high-quality materials is also easy to dismantle and recycle at the end of its lifetime. In case toolless opening and closing of the gear cover is required the LumiStreet gen2 Pro version can be chosen.

Toote andmetabel

Philips - BGP282 LED69-4S/730 DM10



Artikli nr.	BGP282I-76d5d47d-04ad-4213-ac66-1c3405f3dbd4
P	42.0 W
Φ_{Lamp}	7000 lm
Φ_{Valgusti}	6090 lm
η	87.00 %
Valgusviljakus	145.0 lm/W
CCT	3000 K
CRI	70

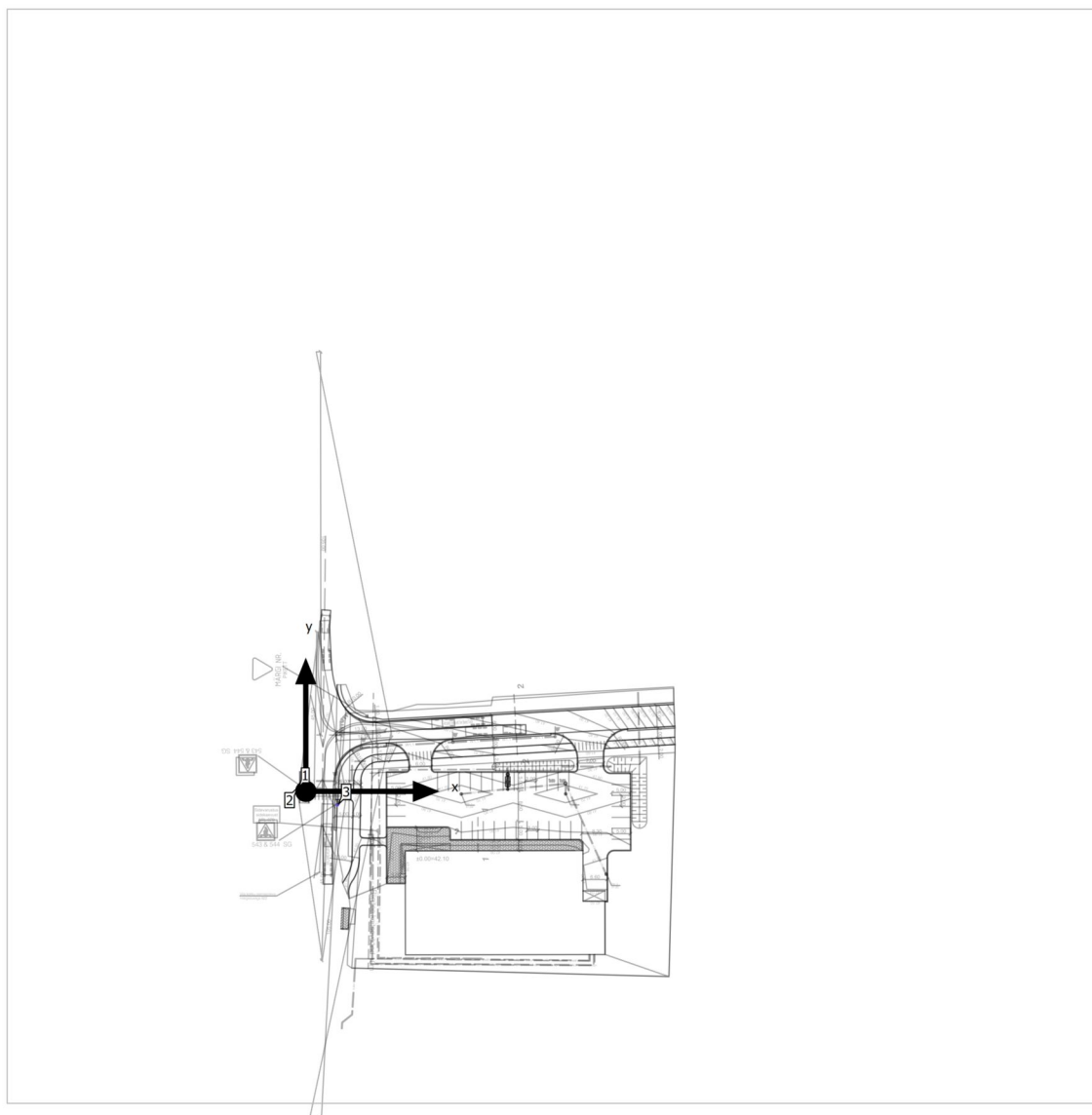


Polaarne LDC

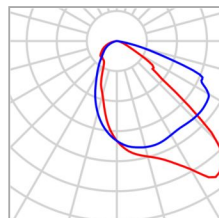
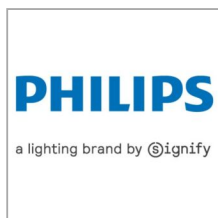
Designed for ledification projects, the LumiStreet gen2 is the ideal 1:1 luminaire replacement for municipalities. Thanks to its high efficiency and low initial cost, the LumiStreet gen2 luminaire enables a fast payback and significant savings in terms of energy consumption within a short period of time. The ease of installation and maintenance is enabled by the Service tag and the SR (System Ready) Zhaga socket(s) makes it future-ready, and you can pair this luminaire with lighting control or sensors and software applications such as Interact City. Available with a significant number of different optics and lumen packages that can even be tuned further to fit exact project requirements, LumiStreet gen2 is a true point-to-point replacement solution for conventional or generation 1 LED light sources. The compact luminaire, using high-quality materials is also easy to dismantle and recycle at the end of its lifetime. In case toolless opening and closing of the gear cover is required the LumiStreet gen2 Pro version can be chosen.

Territoorium 1

Valgustite asendiskeem



Territoorium 1

Valgustite asendiskeem

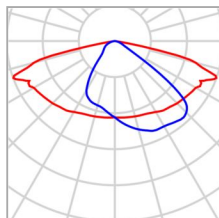
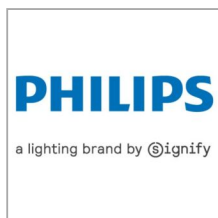
Tootja	Philips	P	11.2 W
Artikli nr.	BGP282I-31354e42-cf40-4e33-b87a-b81313b7e454	ΦValgusti	1620 lm
Artikli nimi	BGP282 LED18-4S/757 DPR1		
Varustatus	1x LED18-4S/757		

Üksikud valgustid

X	Y	Paigalduskõrgus	Valgusti
-2.344 m	0.877 m	6.103 m	2
8.924 m	-3.782 m	6.103 m	3

Territoorium 1

Valgustite asendiskeem



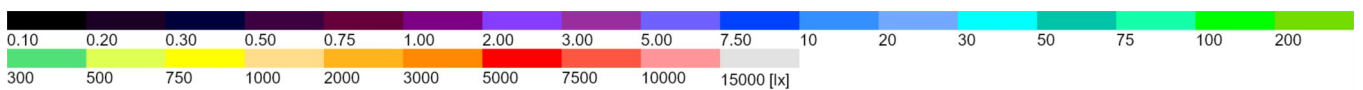
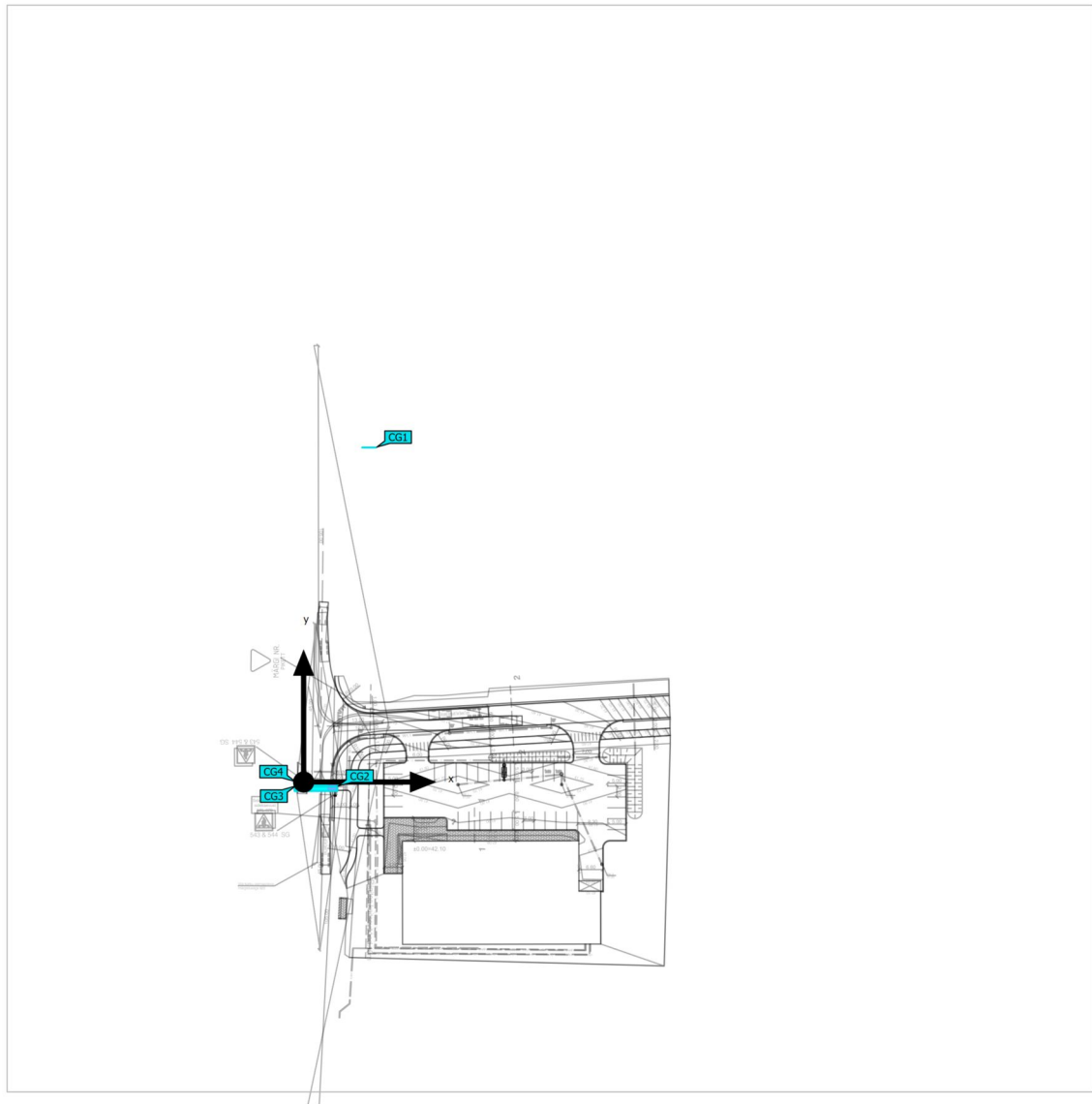
Tootja	Philips	P	42.0 W
Artikli nr.	BGP282I-76d5d47d-04ad-4213-ac66-1c3405f3dbd4	ΦValgusti	6090 lm
Artikli nimi	BGP282 LED69-4S/730 DM10		
Varustatus	1x LED69-4S/730		

Üksikud valgustid

X	Y	Paigalduskõrgus	Valgusti
-2.357 m	0.877 m	8.007 m	1

Territoorium 1 (Valgussteen 1)

Arvutuse objektid



Territoorium 1 (Valgusstseen 1)

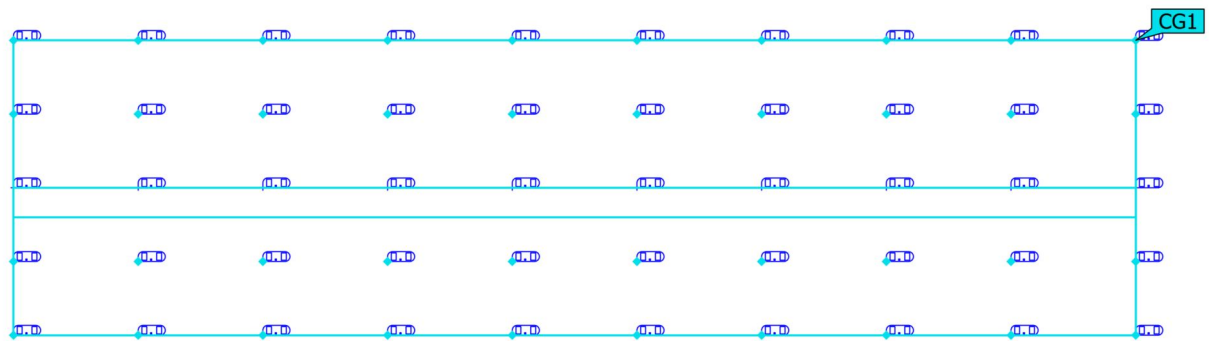
Arvutuse objektid

Arvutuspinnad

Atribuudid	\bar{E}	E_{min}	E_{max}	$U_o (g_1)$	g_2	Indeks
Arvutuspind 4 Ristine valgustustihedus Kõrgus: 0.000 m	0.000 lx	0.00 lx	0.000 lx	-	-	CG1
Arvutuspind 5 Ristine valgustustihedus Kõrgus: 1.000 m	7.14 lx	1.74 lx	12.8 lx	0.24	0.14	CG2
Arvutuspind 6 Ristine valgustustihedus Kõrgus: 1.000 m	10.5 lx	1.17 lx	24.5 lx	0.11	0.048	CG3
Arvutuspind 7 Ristine valgustustihedus Kõrgus: 1.000 m	37.1 lx	19.6 lx	48.2 lx	0.53	0.41	CG4

Kasutamisprofiil: DIALuxi eelsäte (5.1.4 Standard (liikluspind väljas))

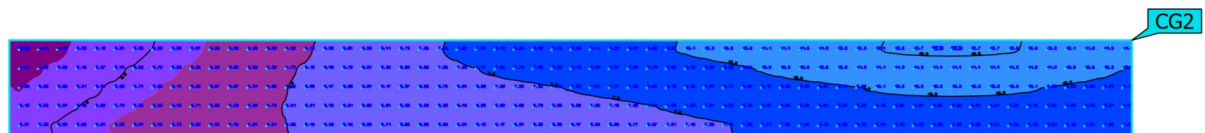
Territoorium 1 (Valgustseen 1)

Arvutuspind 4

Atribuudid	\bar{E}	E_{min}	E_{max}	$U_o (g_1)$	g_2	Indeks
Arvutuspind 4 Ristine valgustustihedus Kõrgus: 0.000 m	0.000 lx	0.00 lx	0.000 lx	-	-	CG1

Kasutamisprofiil: DIALuxi eelsäte (5.1.4 Standard (liikluspind väljas))

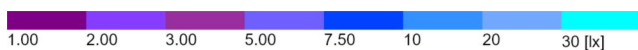
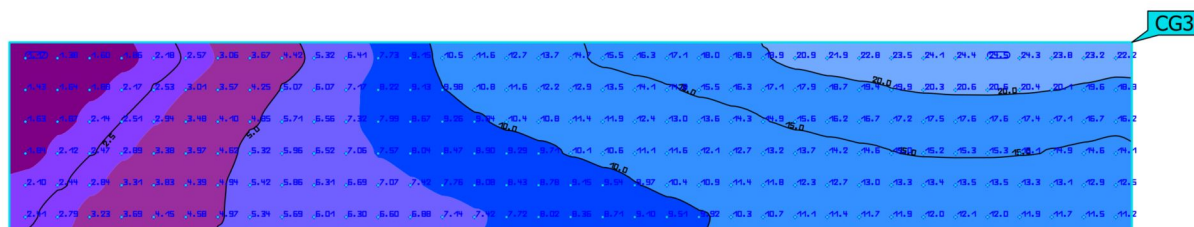
Territoorium 1 (Valgustseen 1)

Arvutuspind 5

Atribuudid	\bar{E}	E_{\min}	E_{\max}	$U_o (g_1)$	g_2	Indeks
Arvutuspind 5 Ristine valgustustihedus Kõrgus: 1.000 m	7.14 lx	1.74 lx	12.8 lx	0.24	0.14	CG2

Kasutamisprofiil: DIALuxi eelsäte (5.1.4 Standard (liikluspind väljas))

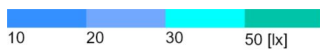
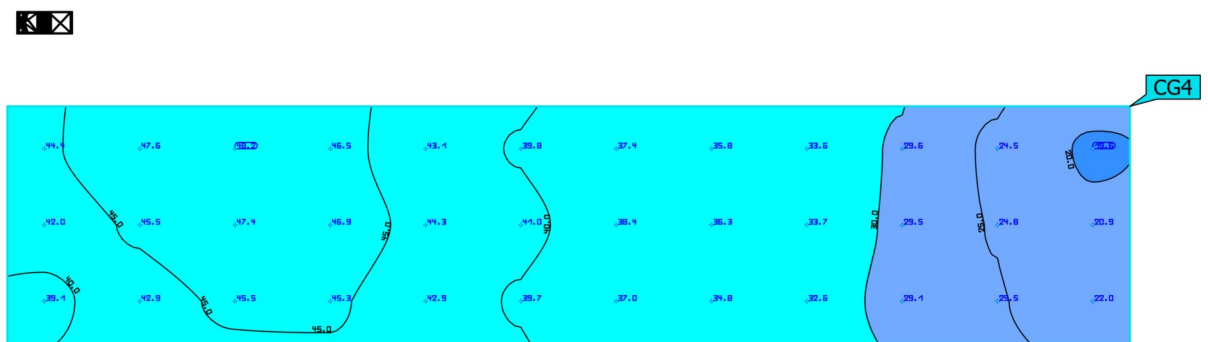
Territoorium 1 (Valgustseen 1)

Arvutuspind 6

Atribuudid	Ē	E _{min}	E _{max}	U ₀ (g ₁)	g ₂	Indeks
Arvutuspind 6 Ristine valgustustihedus Kõrgus: 1.000 m	10.5 lx	1.17 lx	24.5 lx	0.11	0.048	CG3

Kasutamispriifil: DIALuxi eelsäte (5.1.4 Standard (liikluspind väljas))

Territoorium 1 (Valgustseen 1)

Arvutuspind 7

Atribuudid	\bar{E}	E_{\min}	E_{\max}	$U_o (g_1)$	g_2	Indeks
Arvutuspind 7 Ristine valgustustihedus Kõrgus: 1.000 m	37.1 lx	19.6 lx	48.2 lx	0.53	0.41	CG4

Kasutamisprofiil: DIALuxi eelsäte (5.1.4 Standard (liikluspind väljas))